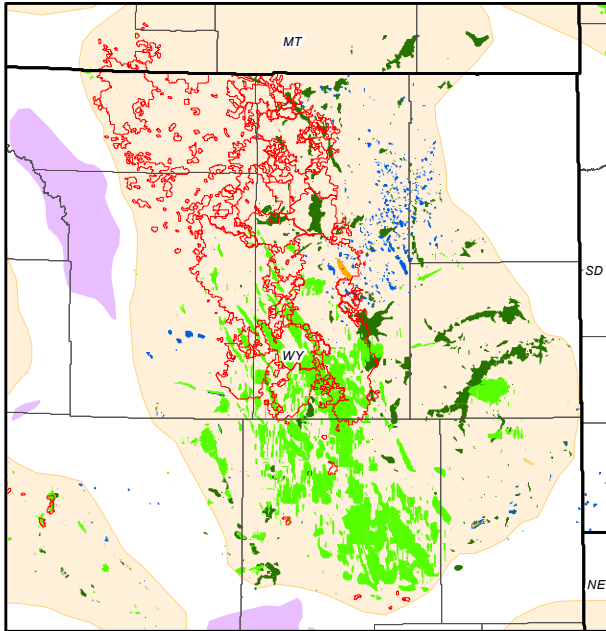
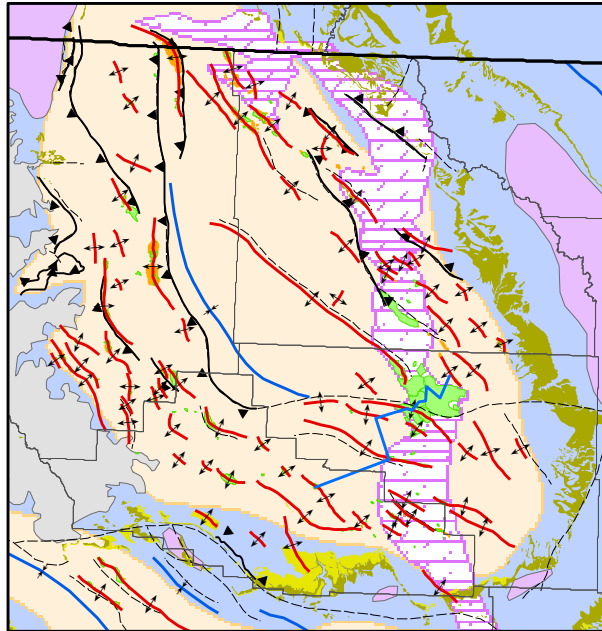


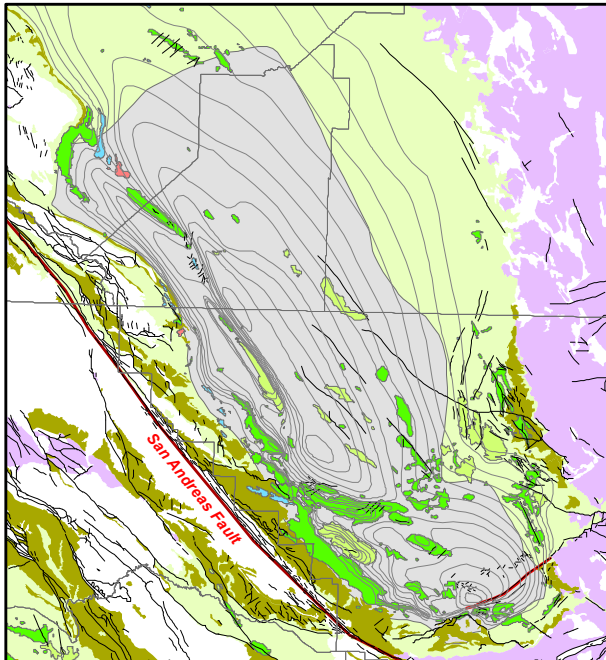
Attributed Oil and Gas Fields



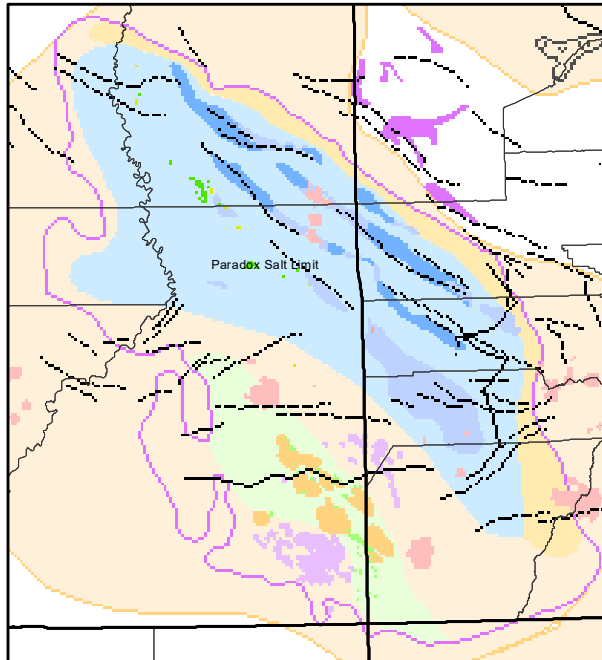
Bighorn Basin



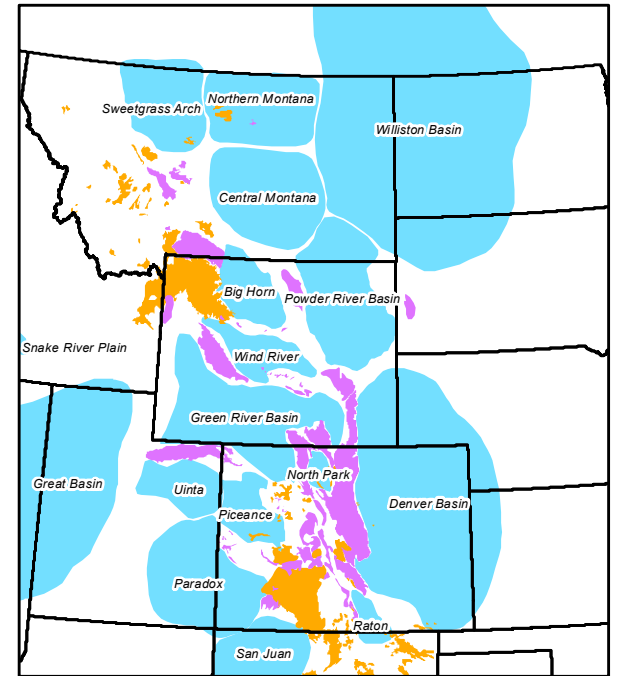
San Joaquin Basin



Paradox Basin



**Western USA
Geological Edge Set**
for all digital mapping applications



- GeoEdges Inc. provides detailed, accurate subsurface geology at your fingertips in **ArcGIS**, **GeoGraphix**, **Petra** and all other **ESRI Shapefile** compatible mapping applications
- Includes geological features for Montana, North Dakota, Wyoming, Utah, Colorado, Idaho, Nevada, California and Alaska
- Coverage area includes the entire Williston Basin (including Canada), Sweetgrass Arch, central and southern Montana, Powder River, Bighorn, Wind River, Green River, Southern Wyoming, Denver, Piceance, Uinta, San Juan and Paradox Basins

Annual License Subscription - 2024 Pricing

The Western USA Geological Edge Set

is available to subscribing companies on an annual license basis, based on daily production as follows:

<2,000 BOE/d	USD \$6,650 per year
<10,000 BOE/d	USD \$9,500 per year
<20,000 BOE/d	USD \$12,350 per year
<60,000 BOE/d	USD \$15,200 per year
<100,000 BOE/d	USD \$17,100 per year
>100,000 BOE/d	USD \$19,000 per year

Annual License fee includes:

- Full set of ESRI shapefiles for import into Petra, GeoGraphix, ArcGIS, and other applications
- Petra Thematic Map projects, GeoGraphix projects, ArcGIS MXD and Layer files
- Hard copy prints of key play maps
- Stratigraphic cross-sections in PDF format
- User's manual in digital format
- Bi-annual updates and additions to mapping
- Full technical support

Geological features provided (partial list only):

Tertiary:

Ft. Union CBM fairway, Green River Fm.

Cretaceous:

Cut Bank Valley edge, Moulton sand, Muddy, Dakota, U. Sunburst channels, Frontier, J Sand, D Sand, Almond, Lewis, Mesaverde, Niobrara, Codell, Shannon-Eagle, Sussex, Parkman-Judith R., Teapot, Teckla

Pennsylvanian:

Tyler subcrop, Lower Tyler sand, Minnelusa, Morrow channels, Paradox Ismay, Desert Ck., Gothic, Hovenweep

Mississippian:

Kibbey, Poplar, Ratcliffe, Midale, Tilston, Lodgepole and Bakken subcrops, Heath Shale; Flat Lake, Berentson, Rival-Nesson, Bluell, Sherwood, Glenbum, Mohall anhydrite barriers; Bakken maturity limit, Bakken subcrops

Devonian:

Devonian, Dawson Bay, Duperow and Birdbear subcrops, Devonian salt edge (Williston)

Pre-Devonian

Red River, Stony Mountain and Silurian subcrops

General features:

Basin outlines, Precambrian exposed areas, igneous intrusions, volcanics, deformation front, thrusts, major faults, anticline, syncline and basin axes

Fields: Tertiary, Upper Cretaceous, Lower Cretaceous, Jurassic, Triassic, Permian, Pennsylvanian, Mississippian, Bakken, Devonian, Silurian, Ordovician

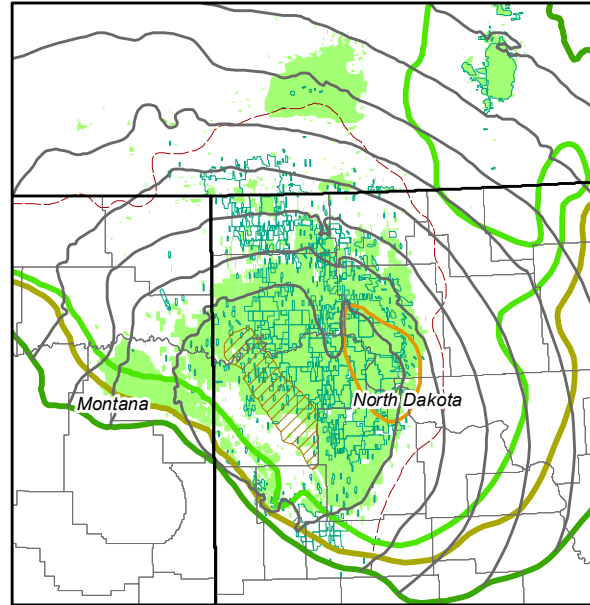
For more information contact:

Joel Harding +1 403 870 8122
joelharding@geoedges.com

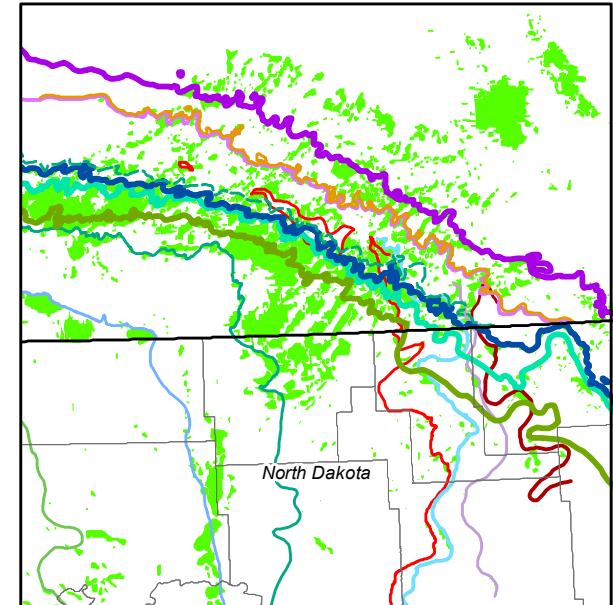
Mike Sherwin +1 403 263 0594
mikesherwin@geoedges.com

www.geoedges.com

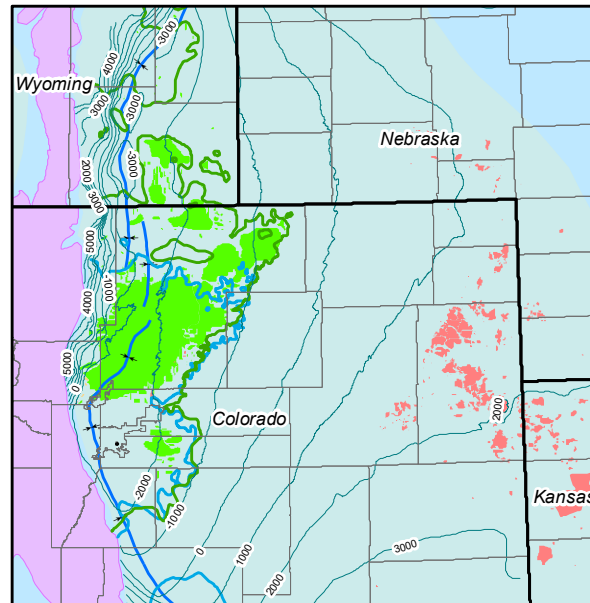
Bakken - Williston Basin



Mississippian - Williston Basin



Niobrara - DJ Basin



Parkman - Powder River Basin

