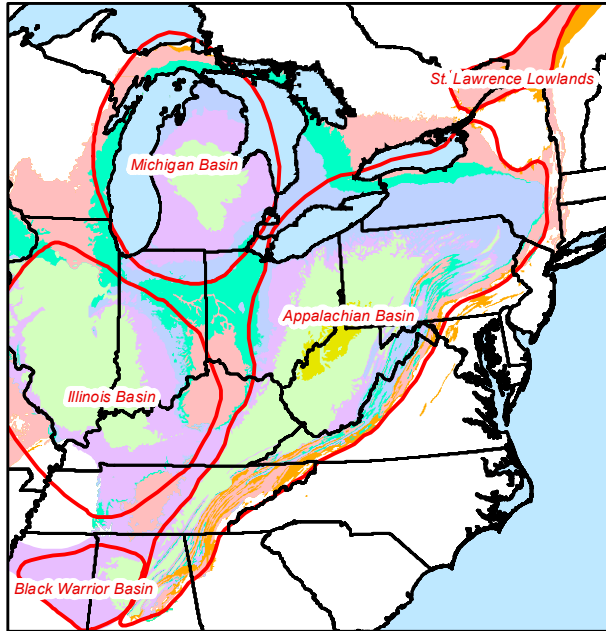
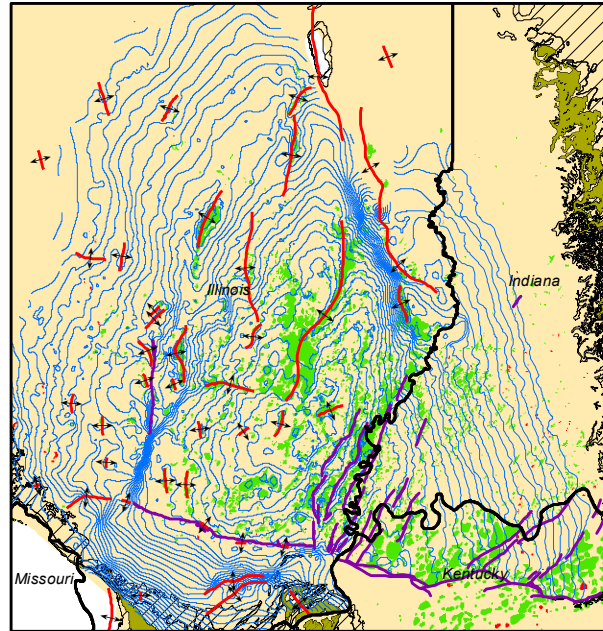


Stratigraphic Limits

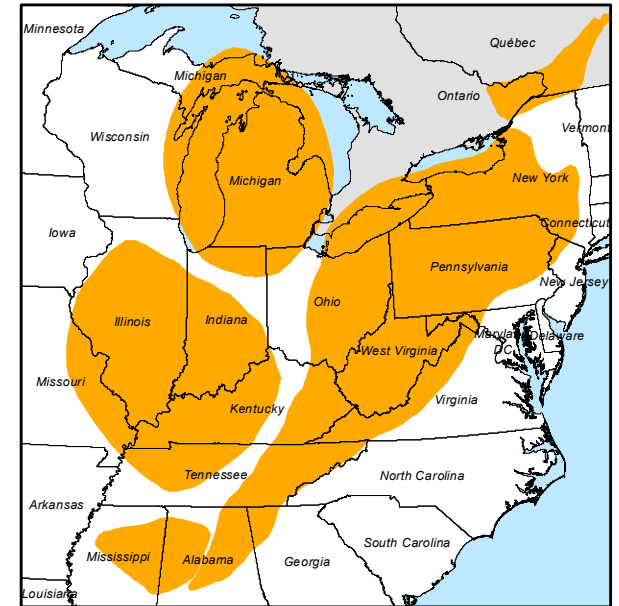


Mississippian - Illinois Basin

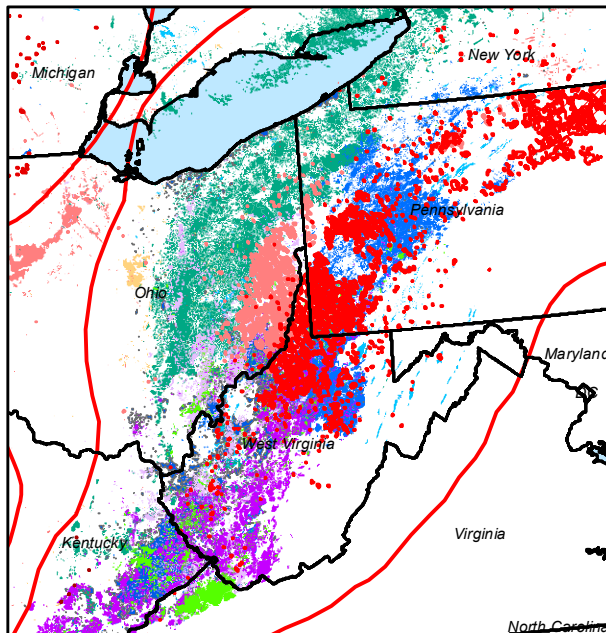


Eastern USA Geological Edge Set

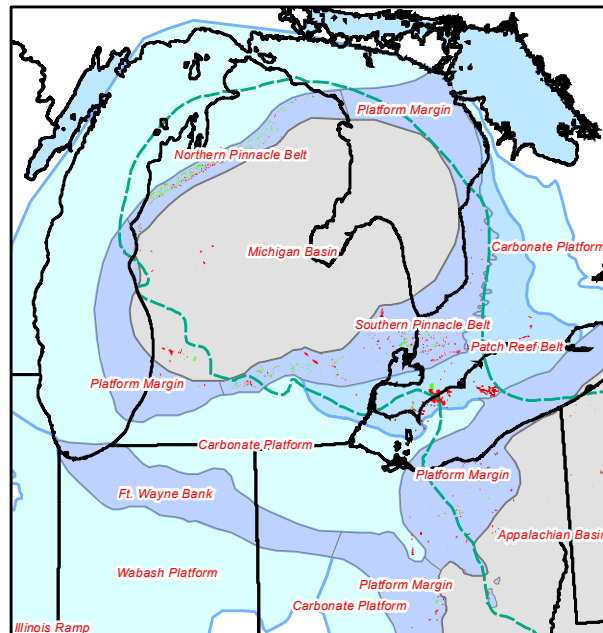
for all digital mapping applications



Oil and Gas Fields by Reservoir Age



Niagaran Paleogeography and Fields



- GeoEdges Inc. provides detailed, accurate subsurface geology at your fingertips in **ArcGIS**, **GeoGraphix**, **Petra** and all other **ESRI Shapefile** compatible mapping applications

- Includes geological features for New York, Ohio, Pennsylvania, Kentucky, Tennessee, West Virginia, Virginia, Michigan, Ontario and Quebec; mapping of the Appalachian, Michigan, Illinois, Black Warrior, St. Lawrence, and Canadian Maritime basins

- Includes field outlines, structural features, formation limits and outcrops, reservoir trends, structure and isopach maps, shale gas trends

Annual License Subscription - 2024 Pricing

The **Eastern USA Geological Edge Set** is available to subscribing companies on an annual license basis, based on daily production as follows:

<2,000 BOE/d	USD \$6,650 per year
<10,000 BOE/d	USD \$9,500 per year
<20,000 BOE/d	USD \$12,350 per year
<60,000 BOE/d	USD \$15,200 per year
<100,000 BOE/d	USD \$17,100 per year
>100,000 BOE/d	USD \$19,000 per year

Annual License fee includes:

- Full set of ESRI shapefiles for import into Petra, GeoGraphix, ArcGIS and other applications
- Petra Thematic Map projects, GeoGraphix projects ArcGIS MXD and Layer files
- Hard copy prints of key play maps
- Stratigraphic cross-sections in PDF format
- User's manual in digital format
- Bi-annual updates and additions to mapping
- Full technical support

Geological features provided (partial list only):

Shale Gas: Marcellus, Genesee, Rhinestreet, Huron, Sonyea, Cleveland radioactive shale isopachs, Antrim, New Albany, Collingwood-Utica, Onondaga structure

Mississippian: Berea western and eastern limits, outcrop, gross sand isopach, Second Berea sand and delta, Cussewago limit; Weir, Big Injun producing fairways

Devonian Sands: Venango, Bradford, Elk sandstone isopachs and cycle limits

Silurian: Medina-Clinton, Grimsby, Whirpool, Tuscarora sandstone isopachs

Ordovician: Utica and Collingwood formation limits, mature source rock, Trenton structure

Fields: Pennsylvanian, Berea, Murrsville-Cussewago, Big Lime, Marcellus, Devonian shale, Venango, Bradford, Elk, Tuscarora, Clinton, Trenton, Knox

General features: Basin outlines (Appalachian, Michigan, Illinois, Black Warrior, St. Lawrence Lowlands), faults, anticline and syncline axes, arches, Allegheny Front, Cincinnati Arch, Pine Mtn Thrust, Logan's Line, state, province and county lines

Stratigraphic limits: Cambrian, Ordovician, Silurian, Devonian, Mississippian, Pennsylvanian, Permian

Outcrops: Antrim, Marcellus, New Albany, Ohio, Rhinestreet, Sonyea, Tully, Berea, Utica, Venango, etc.

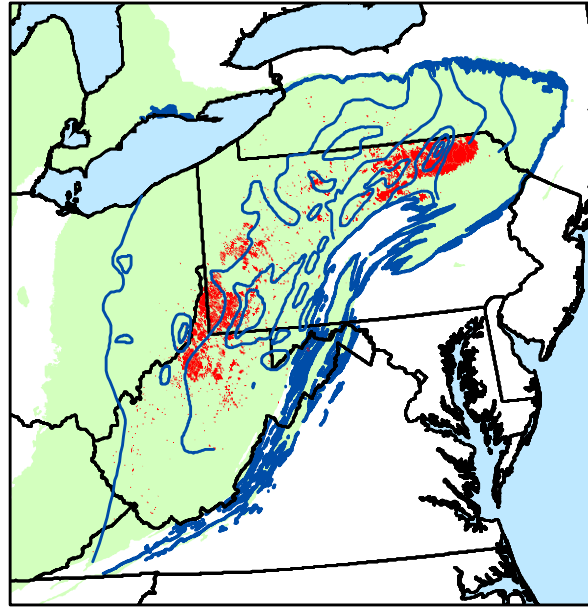
For more information contact:

Joel Harding +1 403 870 8122
joelharding@geoedges.com

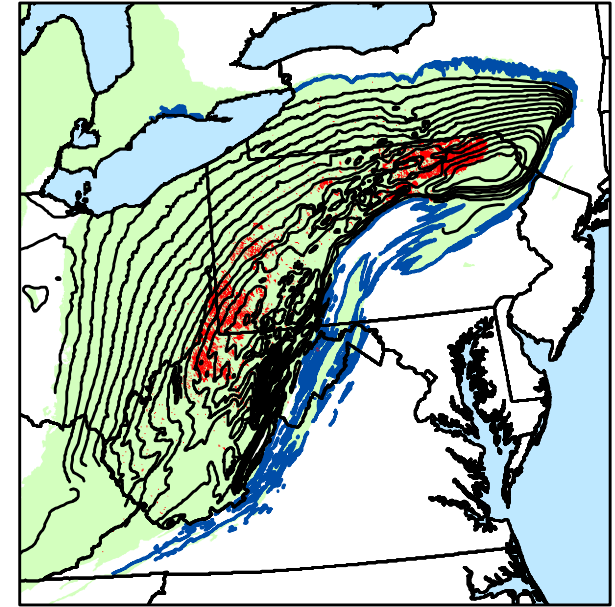
Mike Sherwin +1 403 263 0594
mikesherwin@geoedges.com

www.geoedges.com

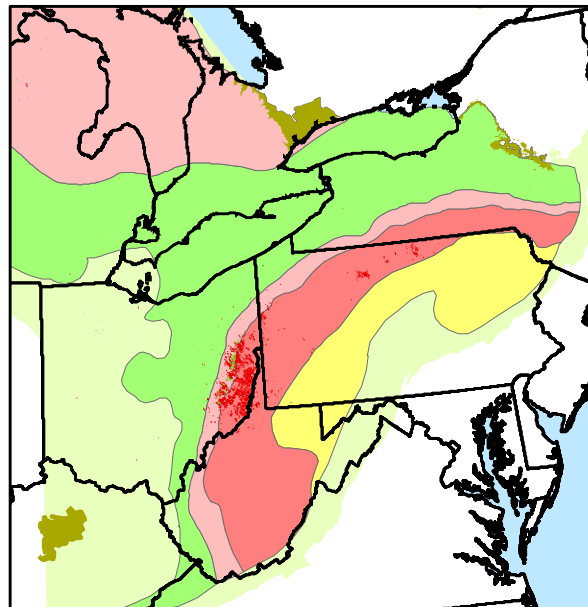
Marcellus - Appalachian Basin



Onondaga Structure - Appalachian Basin



Utica Fields and Hydrocarbon Windows



Utica Fairway - Appalachian Basin

