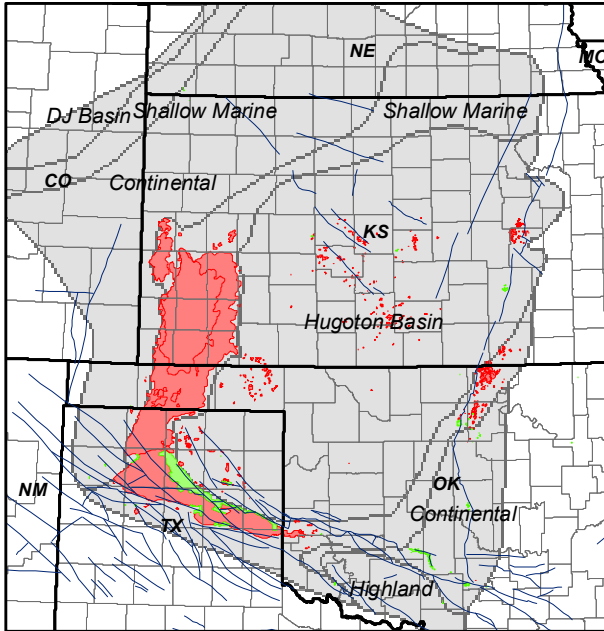
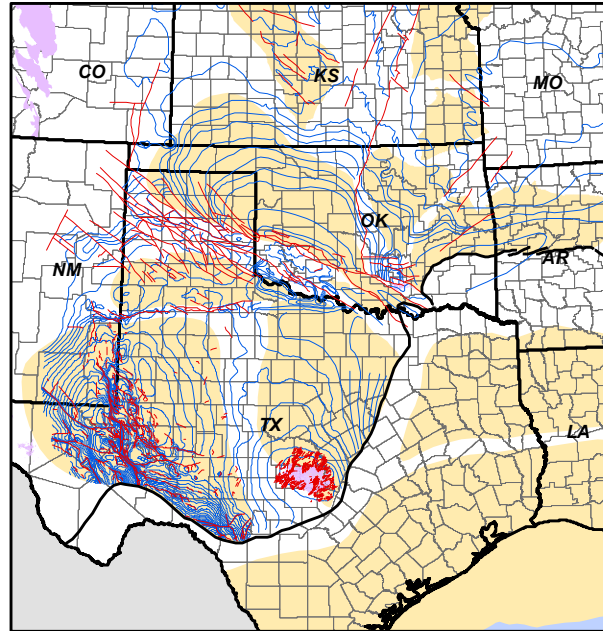


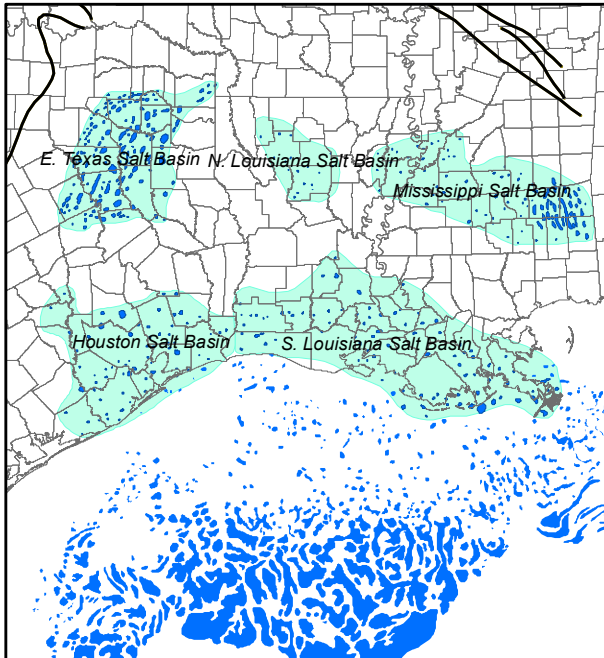
## Wolfcampian - Hugoton Embayment



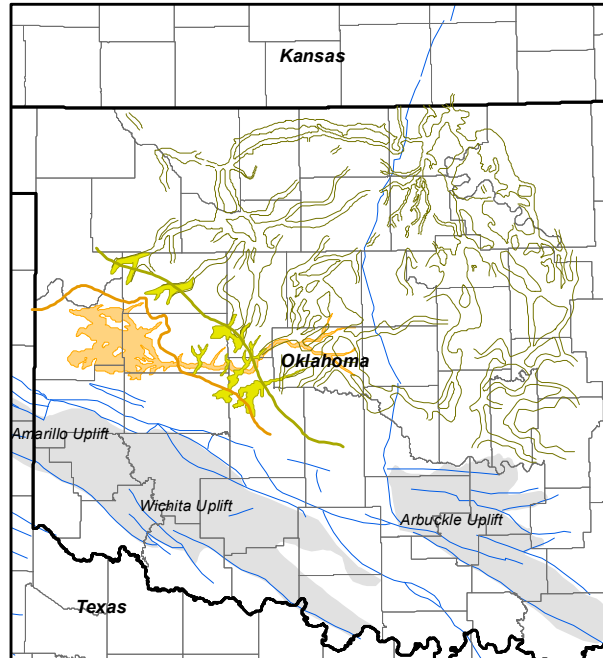
## Precambrian Structure



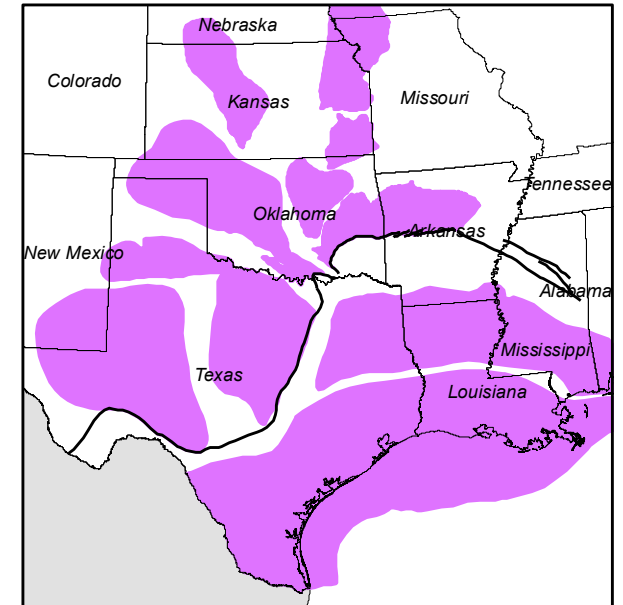
## Gulf Coast Salt Basins and Diapirs



## Pennsylvanian Red Fork Sandstones



## Central USA Geological Edge Set for all digital mapping applications



- GeoEdges provides detailed and accurate subsurface geology at your fingertips in **ArcGIS**, **GeoGraphix**, **Petra** and all other **ESRI Shapefile** compatible mapping applications

- Includes geological features for Texas, Oklahoma, Kansas, SE New Mexico, Arkansas and Louisiana; mapping provided of the Anadarko, Arkoma, Fort Worth, Ardmore, Permian, Forest City, Maverick, and East Texas-Louisiana Salt Basins

- Includes field outlines, structural features, formation limits and outcrops, reservoir trends, structure and isopach maps, shale gas trends

## Annual License Subscription - 2024 Pricing

The **Central USA Geological Edge Set** is available to subscribing companies on an annual license basis, based on daily production as follows:

|                |                       |
|----------------|-----------------------|
| <2,000 BOE/d   | USD \$6,650 per year  |
| <10,000 BOE/d  | USD \$9,500 per year  |
| <20,000 BOE/d  | USD \$12,350 per year |
| <60,000 BOE/d  | USD \$15,200 per year |
| <100,000 BOE/d | USD \$17,100 per year |
| >100,000 BOE/d | USD \$19,000 per year |

### Annual License Fee includes:

- Full set of ESRI shapefiles for import into Petra, GeoGraphix, ArcGIS and other applications
- Petra Thematic Map projects, GeoGraphix projects, ArcGIS MXD and Layer files
- Hard copy prints of key play maps
- Stratigraphic cross-sections in PDF format
- User's manual in digital format
- Bi-annual updates and additions to mapping
- Full technical support

### Geological features provided (partial list only):

**General:** states, counties, T/R grid, arches, faults, Wichita and Arbuckle Uplifts, basin outlines, salt basins, salt diapirs, salt structures, Ouachita front, outcrops

**O&G Fields:** Tertiary, Cretaceous, Jurassic, Guadalupian, Leonardian, Wolfcampian, Virgillian, Missourian, Desmoinesian, Atokan, Mississippian, Devonian, Silurian, Ordovician

**Tertiary:** Frio, Yegua, Wilcox

**Cretaceous:** Eagle Ford oil, gas condensate, dry gas windows, Buda structure, Eagleford isopach, fields; Edwards and Sligo reefs; Tuscaloosa radioactive shale limit, structure, isopach

**Jurassic:** Bossier limit, play area, shelf edge; Haynesville fields, structure, shelf break, producing fairway, organic shale limit, carbonate shoals, exposed islands, submarine fans; Jurassic limit

**Permian:** Hugoton Wolfcampian basin; Permian Wolfcampian, Leonardian, Guadalupian paleogeography, Spraberry shelf edge

**Pennsylvanian:** Atokan Dolomite Wash limit, Granite Wash fields; Lower Red Fork channels, sandstone, shelf edge; Upper Red Fork sandstone, shelf edge; Morrow isopach, fields, facies

**Mississippian:** Barnett limit, structure, isopach, gas window; Viola-Simpson, Marble Falls, Forestburg limits; Fayetteville-Caney limit, structure, isopach, platform margin, subcrops, horizontal play areas, Mississippian Chat

**Devonian:** Woodford faults, structure, isopach, fields, maturity

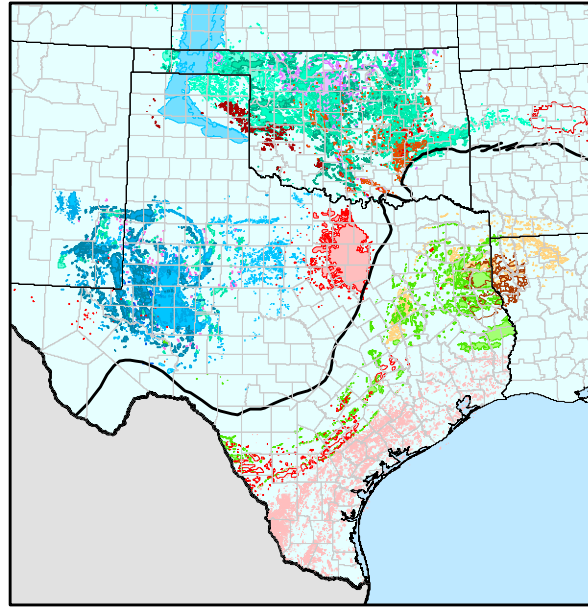
### For more information contact:

Joel Harding +1 403 870 8122  
joelharding@geoedges.com

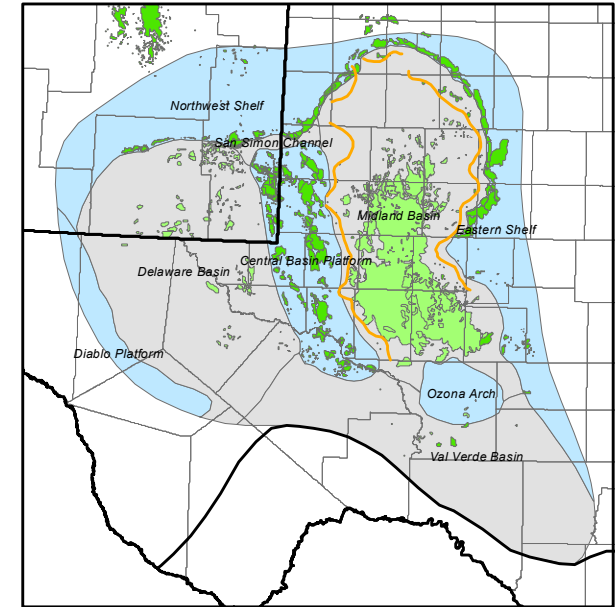
Mike Sherwin +1 403 263 0594  
mikesherwin@geoedges.com

[www.geoedges.com](http://www.geoedges.com)

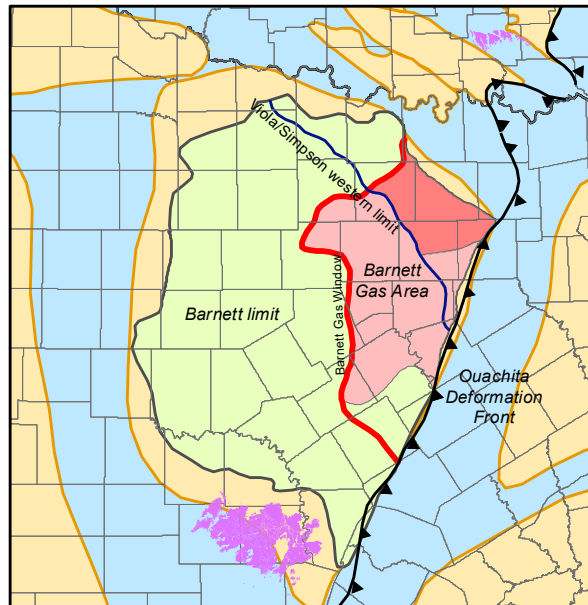
## Attributed Oil and Gas Fields



## Leonardian - Permian Basin



## Barnett - Fort Worth Basin



## Granite Wash - Anadarko Basin

